

Research and Evaluation of Family Involvement in Education: What Lies Ahead?

Division H: School Evaluation and Program Development

Heather Weiss, Chair; Joyce Epstein, Anne Henderson, Kathleen Hoover-Dempsey, William Jeynes

Thursday, April 14, 2005; 12:25-1:55: Le Centre Sheraton Montreal, Salon 8

Kathy Hoover-Dempsey, Psychology & Human Development, Vanderbilt University (kathleen.v.hoover-dempsey@vanderbilt.edu)

Today we're considering specific elements of a *system of family-student-school-community relationships*, including:

- Parent-child and parent-student-school relationships
 - Why parents become involved
 - How their involvement influences student outcomes
 - How teachers and schools can be supported in encouraging involvement
- Broader issues in parental behavior and relationships with schools (e.g., home-school communication, parental expectations for school success)
- School-based programs of school, family, and community partnerships; roles of districts and states in guiding these programs
- Community organizing as a means of involving parents, improving schools and children's learning and development

This portion of the panel's presentation focuses on the first area: Parent-child and parent-student-school relationships. These are important because:

- Parents and families play a major role in children's school success
- Parents do things with their children that contribute to children's school success
- What parents do to enhance their children's school success is influenced by teachers, schools, and communities

Suggestions and priorities here are based on:

- A theoretically grounded model of the parental involvement process (Hoover-Dempsey & Sandler, 1995, 1997; see Figure 1)
- Research in our lab and by others that has led to changes in the model (Hoover-Dempsey & Sandler, 2005; see Figure 2)
- A process of continuous refinement and revision as we learn more about this portion of the parent/family-child-school-community system

Why do parents become involved? What the research suggests at this point:

- Psychological motivators encourage involvement
 - Parent has an active role construction (believes he or she *should* be involved)
 - Parent has a positive sense of efficacy for helping the child succeed in school (believes his/her involvement will make a difference for the child)
- Parent perceives invitations to involvement from others
 - General school invitations (e.g., welcoming school climate)
 - Specific invitations from the child
 - Specific invitations from the teacher
- Parent perceives that life context variables allow and enable involvement
 - Parent believes he/she has knowledge and skills that will help the child succeed in school
 - Parent believes that she/he has time and energy for involvement

Why do parents become involved? What are priority areas for continued/new research?

- How can schools and teachers encourage active role construction, positive valence toward school, strong sense of efficacy? How do these activities change across the developmental periods of preschool through high school?
- What kinds of invitations from others (school general, child specific, teacher specific) are most effective in encouraging involvement? How do the content and focus of effective invitations change from the preschool through the high school years?

- How can schools most effectively tailor invitations to family/community/cultural realities? How do these approaches change across different family cultures and communities? How do they change as parents and schools experience success in this area?

How does parental involvement influence student outcomes? What the research suggests at this point:

- Through home-based, school-based, and other forms of involvement
- Through specific mechanisms of influence, including encouragement, modeling, reinforcement, and instruction
- Through children's perceptions of parents' involvement
- Through the influence of parents' involvement on proximal student outcomes, e.g.,
 - Academic self-efficacy
 - Intrinsic motivation for learning
 - Self-regulatory strategy use
 - Social self-efficacy for relating to teachers

How does parental involvement influence student outcomes? What are priority areas for continued/new research?

- How may schools best offer and encourage forms of involvement most consistent with family culture and circumstances?
- What mechanisms of parental influence are particularly helpful in supporting children's school success? How do these change across time (pre-K through 12) and across family circumstances?
- What proximal student outcomes are strongest targets for parental involvement influence?

How can teachers and schools be supported in encouraging involvement? What the research suggests at this point:

- The importance of focused, respectful, participatory school consultation/in-service programming that builds on
 - Participant experiences and strengths
 - Parent and community experiences and strengths
 - Takes participants' and families' positive and negative experiences into account
 - Encourages active brainstorming, planning with peers and parents
 - Encourages on-going evaluation and adjustment of approaches, plans, programs
- The importance of strong, informed principal and district support

How can teachers and schools be supported in encouraging involvement? What are priority areas for continued/new research?

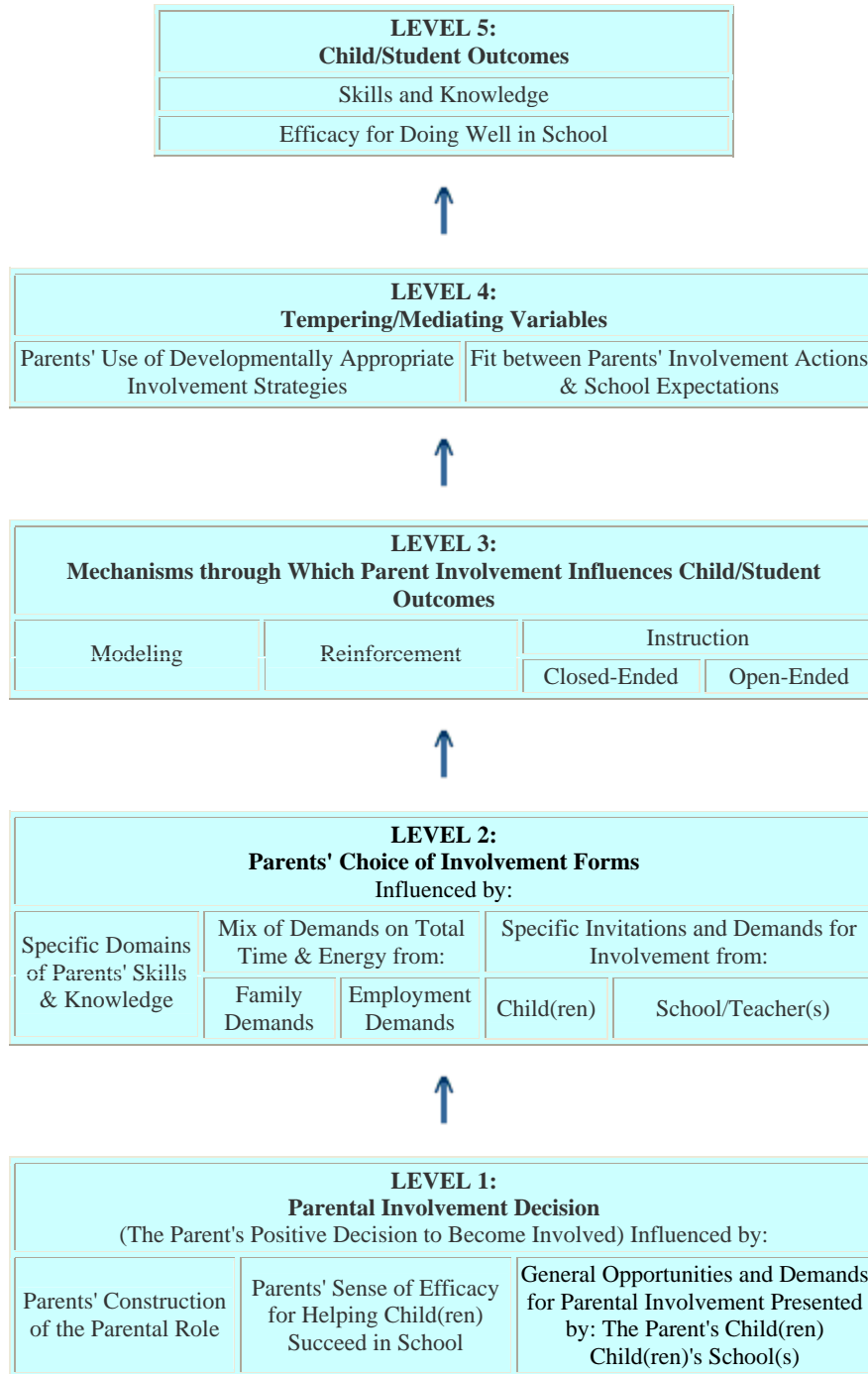
- What influence does pre-service preparation for parent, family, community involvement have on teachers' sense of efficacy for involvement, invitations to involvement?
- How can new-teacher mentoring programs best support teachers' family involvement practices?
- What pedagogical and consultation approaches are most effective in enhancing teachers' and schools' invitations to parental involvement

Sample References

- Adams, K.S., & Christenson, S.L. (1998). Differences in parent and teacher trust levels: Implications for creating collaborative family-school relationships. *Special Services in the Schools, 14*(1/2), 1-22
- Balli, S. J., Demo, D. H., & Wedman, J. F. (1998). Family involvement with children's homework: An intervention in the middle grades. *Family Relations, 47*, 149-157.
- Chrispeels, J., & Rivero, E. (2001). Engaging Latino families for student success: How parent education can reshape parents' sense of place in the education of their children. *Peabody Journal of Education, 76*(2), 119-169.
- Collignon, F.F., Men, M., & Tan, S. (2001). Finding ways in: Community-based perspectives on southeast Asian family involvement with schools in a New England state. *Journal of Education for Students Placed at Risk, 6*(1&2), 27-44.
- Delgado-Gaitan, C. (1992). School matters in the Mexican-American home: Socializing children to education. *American Educational Research Journal, 29*(3), 495-513.
- Deslandes, R., Royer, E., Potvin, P., & Leclerc, D. (1999). Patterns of home and school partnership for general and special education students at the secondary level. *Exceptional Children, 65*(4), 496-506.
- Drummond, K.V., & Stipek, D. (2004). Low-income parents' beliefs about their role in children's academic learning. *Elementary School Journal, 104*(3), 197-213.
- Epstein, J.L. (2001). *School, family and community partnerships: Preparing educators and improving schooling*. Boulder, CO: Westview Press.
- Epstein, J. L., & Van Voorhis, F. L. (2001). More than minutes: Teachers' roles in designing homework. *Educational Psychologist, 31*(3), 181-193.
- Garcia, D.C. (2004). Exploring connections between the construct of teacher efficacy and family involvement practices: Implications for urban teacher preparation. *Urban Education, 39*(3), 290-315.
- Garcia Coll, C., Akiba, D., Palacios, N., Bailey, B., Silver, R., DiMartino, L., & Chin, C. (2002). Parental involvement in children's education: Lessons from three immigrant groups. *Parenting: Science and Practice, 2*(3), 303-324.
- Gonzalez, M., & Chrispeels, J. (2004). *Do educational programs increase parenting practices at home? Factors influencing Latino parent involvement*. Paper presented at the Annual meeting of the American Educational Research Association, San Diego, CA.
- Gonzalez, N., Andrade, R., Civil, M., & Moll, L. (2001). Bridging funds of distributed knowledge: Creating zones of practice in mathematics. *Journal of Education of Students Placed at Risk, 6*(1-2), 115-132.
- Graue, E., & Brown, C.P. (2003). Preservice teachers' notions of families and schooling. *Teaching and Teacher Education, 19*, 719-735.
- Griffith, J. (2001). Principal leadership of parent involvement. *Journal of Educational Administration, 39*(2), 162-186.
- Griffith, J. (1998). The relation of school structure and social environment to parent involvement in elementary schools. *Elementary School Journal, 99*(1), 53-80.
- Grolnick, W.S., Benjet, C., Kurowski, C.O., & Apostoleris, N.H. (1997). Predictors of parent involvement in children's schooling. *Journal of Educational Psychology, 89*(3), 538-548.
- Grolnick, W. S., & Slowiaczek, M. L. (1994). Parents' involvement in children's schooling: A multidimensional conceptualization and motivational model. *Child Development, 65*, 237-252.
- Henderson, A.T., & Mapp, K.L. (2002). *A new wave of evidence: The impact of school, family, and community connections on student achievement*. Austin, TX: Southwest Educational Development Laboratory.
- Hill, N.E., Castellino, D.R., Lansford, J.E., Nowlin, P., Dodge, K.A., Bates, J.E., & Pettit, G.S. (2004). Parent academic involvement as related to school behavior, achievement, and aspirations: Demographic variations across adolescence. *Child Development, 75*(5), 1491-1509.
- Hoover-Dempsey, K. V., Battiato, A. C., Walker, J. M. T., Reed, R. P., DeJong, J.M., & Jones, K. P. (2001). Parental involvement in homework. *Educational Psychologist, 36*(3), 195-209.
- Hoover-Dempsey, K.V., Walker, J.M.T., Sandler, H.M., Whetsel, D.R., Green, C.L., Wilkins, A.S., & Clossen, K. (in press). Why do parents become involved? Research findings and implications. *Elementary School Journal*.

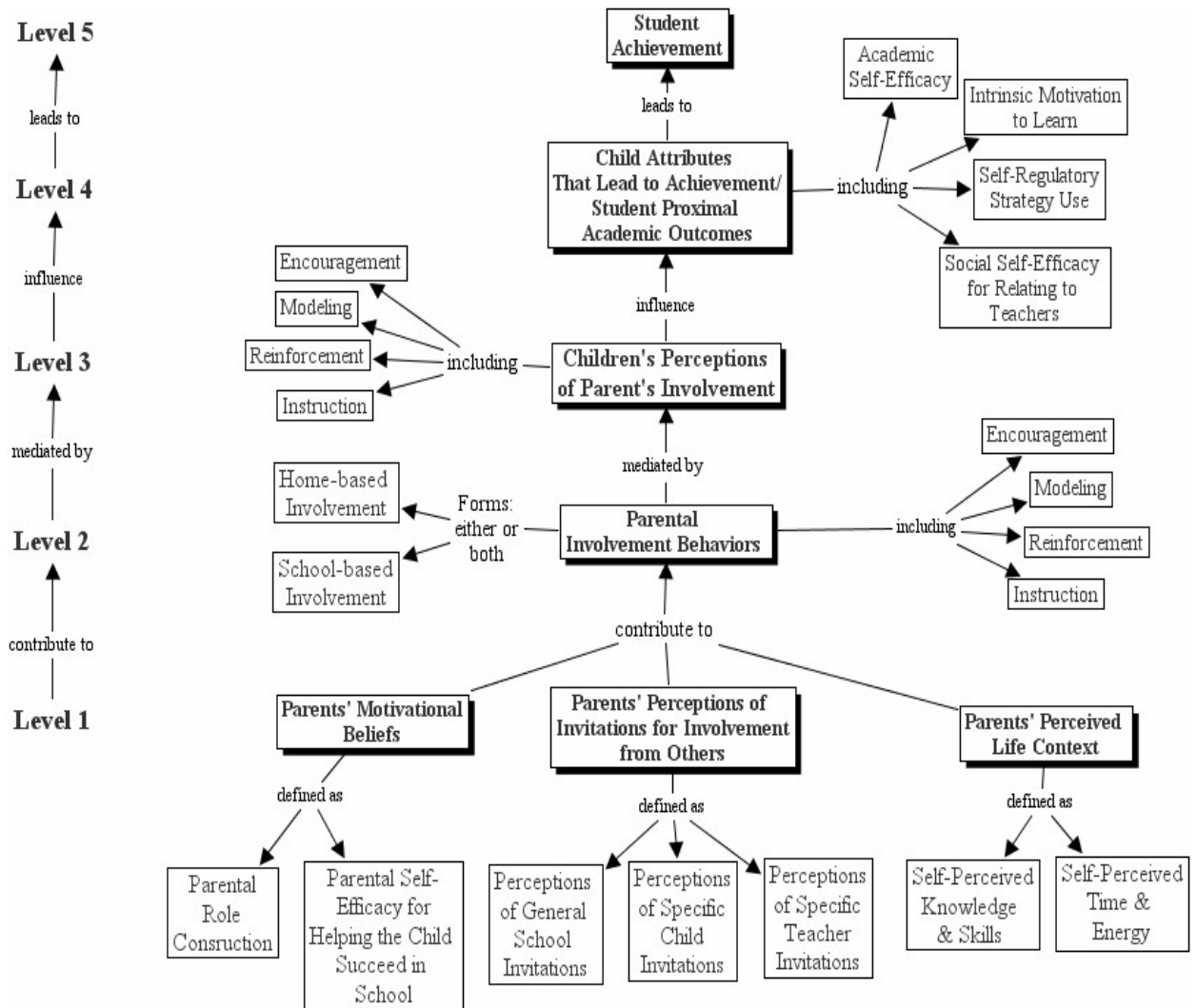
- Hoover-Dempsey, K.V., Walker, J.M., Jones, K.P. & Reed, R.P., & (2002). Teachers Involving Parents (TIP): An in-service teacher education program for enhancing parental involvement. *Teaching and Teacher Education*, 18(7), 843-867.
- Izzo, C.V., Weissberg, R.P., Kasprow, W.J., & Fendrich, M. (1999). A longitudinal assessment of teacher perceptions of parent involvement in children's education and school performance. *American Journal of Community Psychology*, 27(6), 817-839.
- Jeynes, W.H. (2003). A meta-analysis: The effects of parental involvement on minority children's academic achievement. *Education and Urban Society*, 35(2), 202-218.
- Kohl, G.W., Lengua, L.J., & McMahon, R. J. (2002). Parent involvement in school: Conceptualizing multiple dimensions and their relations with family and demographic risk factors. *Journal of School Psychology*, 38(6), 501-523.
- Lareau, A. & Horvat, E.M. (1999). Moments of social inclusion and exclusion: Race, class, and cultural capital in family-school relationships. *Sociology of Education*, 72(1), 37-53.
- Lopez, G.R., Scribner, J.D., & Mahitivanichcha, K. (2001). Redefining parental involvement: Lessons from high-performing migrant-impacted schools. *American Educational Research Journal*, 38(2), 253-288.
- Mattingly, D.J., Prislun, R., McKenzie, T.L., Rodriguez, J.L., & Kayzar, B. (2002). Evaluating evaluations: The case of parent involvement programs. *Review of Educational Research*, 72(4), 549-576.
- Morris, V.G., & Taylor, S.I. (1998). Alleviating barriers to family involvement in education: The role of teacher education. *Teaching and Teacher Education*, 14(2), 219-231.
- Okagaki, L., & Frensch, P.A. (1998). Parenting and children's school achievement: A multiethnic perspective. *American Educational Research Journal*, 35(1), 123-144.
- Patrikakou, E.N., & Weissberg, R.P. (2000). Parents' perceptions of teacher outreach and parent involvement in children's education. *Journal of Prevention and Intervention in the Community*, 20(1-2), 103-119.
- Pomerantz, E.M., & Eaton, M.M. (2001). Maternal intrusive support in the academic context: Transactional socialization processes. *Developmental Psychology*, 37, 174-186.
- Reynolds, A.J., Ou, S-R., & Topitzes, J.W. (2004). Paths of effects of early childhood intervention on educational attainment and delinquency: A confirmatory analysis of the Chicago Child-Parent Centers. *Child Development*, 75(5), 1299-1328.
- Sanders, M.G., & Harvey, A. (2002). Beyond the school walls: A case study of principal leadership for school-community collaboration. *Teachers College Record*, 104(7), 1345-1386.
- Scribner, J.D., Young, M.D., & Pedroza, A. (1999). Building collaborative relationships with parents. In J.D. Scribner & A. Paredes-Scribner (Eds.), *Lessons from high-performing Hispanic schools: Creating learning communities*. NY: Teachers College Press.
- Seefeldt, C., Denton, K., Galper, A., & Younoszai, T. (1998). Former Head Start parents' characteristics, perceptions of school climate, and involvement in their children's education. *Elementary School Journal*, 98(4), 339-349.
- Sheldon, S.B. (2002). Parents' social networks and beliefs as predictors of parent involvement. *Elementary School Journal*, 102, 301-316.
- Shumow, L. (1998). Promoting parental attunement to children's mathematical reasoning through parent education. *Journal of Applied Developmental Psychology*, 19(1), 109-127.
- Shumow, L., & Lomax, R. (2002). Parental efficacy: Predictor of parenting behavior and adolescent outcomes. *Parenting: Science and Practice*, 2, 127-150.
- Simon, B.S. (2004). High school outreach and family involvement. *Social Psychology of Education*, 7, 185-209.
- Soodak, L.C., & Erwin, E.J. (2000). Valued member or tolerated participant: Parents' experiences in inclusive early childhood settings. *Journal of the Association for Persons with Severe Handicaps*, 25(1), 29-41.
- Walker, J.M.T., Wilkins, A.S., Dallaire, J.P., Sandler, H.M., & Hoover-Dempsey, K.V. (in press). Parental involvement: Model revision through scale development. *Elementary School Journal*.
- Weiss, H. B., Mayer, E., Kreider, H., Vaughan, M., Dearing, E., Hencke, R., & Pinto, K. (2003). Making it work: Low-income working mothers' involvement in their children's education. *American Educational Research Journal*, 40(4), 879-901.
- Xu, J., & Corno, L. (2003). Family help and homework management reported by middle school students. *Elementary School Journal*, 103(5), 503-536.

Figure 1: Hoover-Dempsey and Sandler (1995, 1997) original model of the parental involvement process



Source: Hoover-Dempsey, K.V., & Sandler, H.M. (1995). Parental involvement in children's education: Why does it make a difference? *Teachers College Record*, 97, 310-331; Hoover-Dempsey, K.V. & Sandler, H.M. (1997). Why do parents become involved in their children's education? *Review of Educational Research*, 67, 3-42.

Figure 2: Hoover-Dempsey and Sandler (2005) revised model of the parental involvement process



Source: Hoover-Dempsey, K.V., & Sandler, H.M. (2005). *The Social Context of Parental Involvement: A Path to Enhanced Achievement. Final Performance Report: OERI Grant #R305T010673*. Office of Educational Research and Innovation/Institute of Education Sciences, U.S. Department of Education.